

MR-8080

Micro SD to MS PRO Duo Reader

Preliminary Data Sheet

Rev. 1.01



Specification

ITEM	MR- 8080		
Description	Dual Micro SD convert to MS PRO Duo Reader		
Customer		Supplier	Alfa Media
Parts Number		Parts Number	MR- 8080

Approved By	Date	Approved By	Date
Please return one copy with your signature by confirmation			

Alfa Media Industrial Co., Ltd.

6F-1 , No.50 , Roosevelt Rd. Taipei Taiwan (100)

Tel : +886-2-2394-8128

Fax: + 886-2-3322-4445

E-mail : support@alfa-media.com

<http://www.alfa-media.com>

Record of revisions

Date	Page	Detail Description
2010/5/05	-	Preliminary Release

Table of Contents

1 . Product description.....	5
2. Key Features.	6
2-2. Improved features	6
3. Specifications.....	8
5. Testing report	10

Information

- Fig.1 The picture of MR-8080 reader..... 7
- Fig. 2 Dimension and Out look of MR-8080..... 9
- Fig 3. Fig. 3 : Attached testing sample..... 10

1. Product Description.

The MR-8080 is a compact size card reader with form factor just similar with MS Pro Duo ,

It supports dual slot adapter transmission to MS Pro Duo card. For the best performance consideration, the MR- 8080 integrates high efficiency card interface and hardware engine for data transmission.

MORE FASTER Than old 54XX

➤ **Expert Game User**

1. MR-8080 – with its Extreme high speed performance , The PSP Expert no need to worry about the lag problem
2. MR-8080 – with its wide extension capability, The PSP expert will be able store more valuable games on it .

➤ **Camera and Camcorder User**

1. MR-8080 – with its Extreme high speed performance, user can take more higher resolution pictures in higher speed .
2. MR-8080 – wide its extension capability , user will be able keep more pictures and video .

2. Key Features

- Support Dual (2) Micro SD / SD 1.1 /SD 2.0 (SDHC)
- Extreme High speed transfer rate
- Hot Plug & Play
- Multi color supported
- Compatible with MS Pro Duo when insert MicroSD
- Application for DSCetc .

2-2. Special improved Features

1 ***Extreme high speed***

1.1 ***Build in Pipeline burst Engine to support Extreme high speed***

1.2 ***Example : When plug 2cards (C2 + C2) it come out C4 ,***

1.3 ***Plug 2cards (C4 + C4) it come out C8***

1.4 ***Plug 2cards (C6 + C6) it come out C12***

1.5 ***More faster than old version 54XX***

2 ***PC format available***,

2.1 ***User can format it both in devices or in PC***

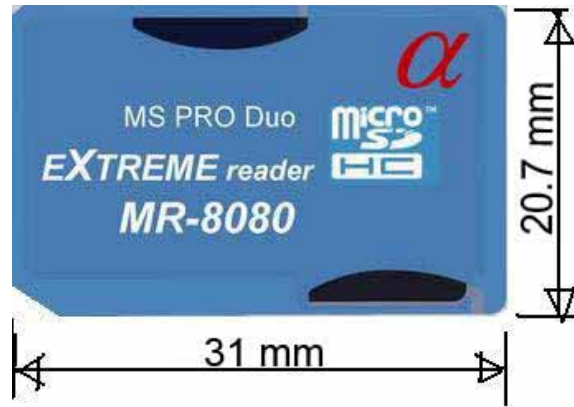
3 ***No slot boundary***

3.1 ***User can use any slot they like for one card only***

4 ***Support latest OS for 6.2 version***

5 ***Support FAT32 / exFAT***

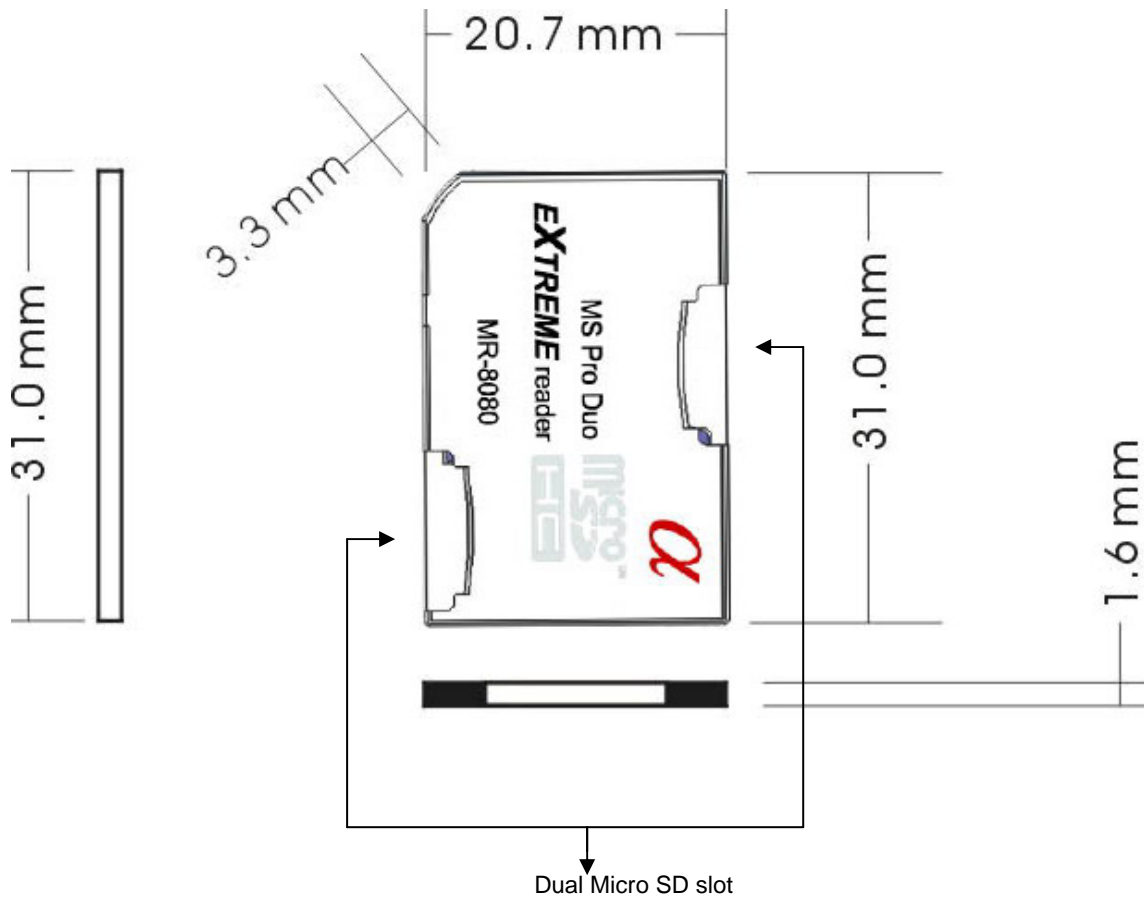
Fig.1 The picture of MR-8080 reader



3. Specification

Item	Description
Dimension	31 mm X 20.7 mm X 1.6mm
Weight	0.5 gm
Operating Temp. range	-25 degree C ~ 65 degree C
Storage Temp. range	-40 degree C ~ 85 degree C
Operating Voltage	+ 5 V

Fig. 2 Dimension and Out look of MR-8080

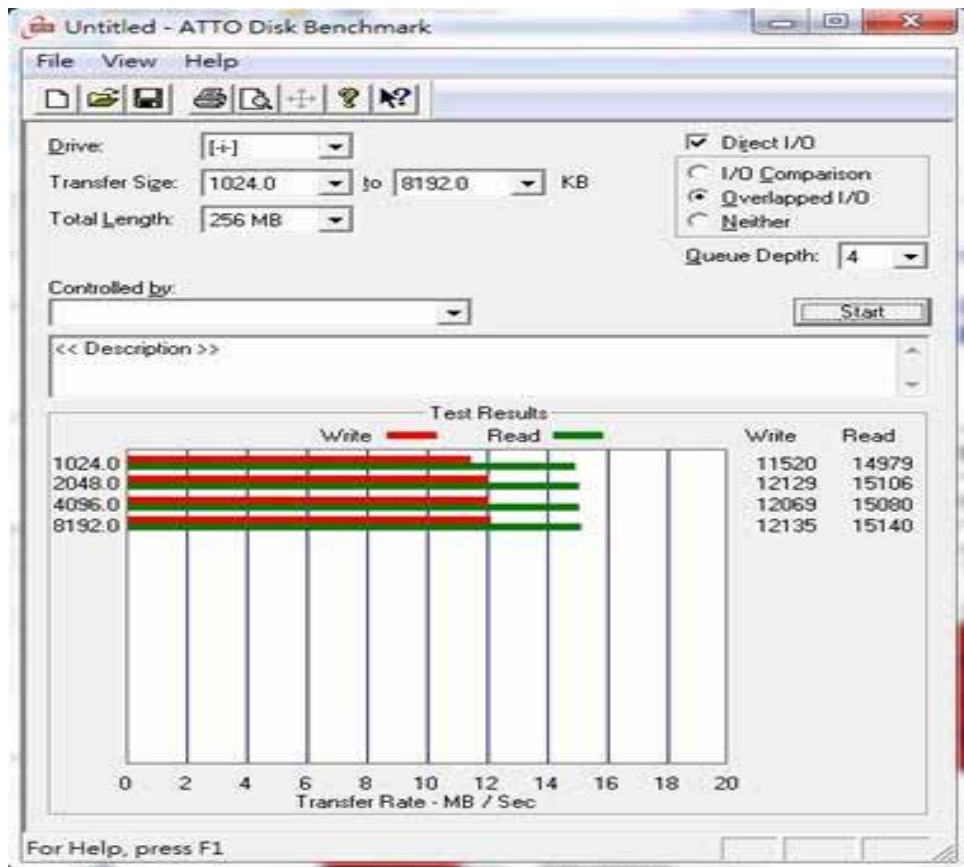


4. Testing report

✓ Toshiba micro SD 1G Class 4 (X2)

		MR- 8080			
TF	Testing tool	Single card		Dual cards	
		W	R	W	R
Toshiba 1G	ATTO Bench	7333	14741	14432	15561
	HD bench	5983	14232	9927	15058

✓ Team micro SD 1G Class 4 (X2)



“Specifications are subjected to change without notice “